

2.

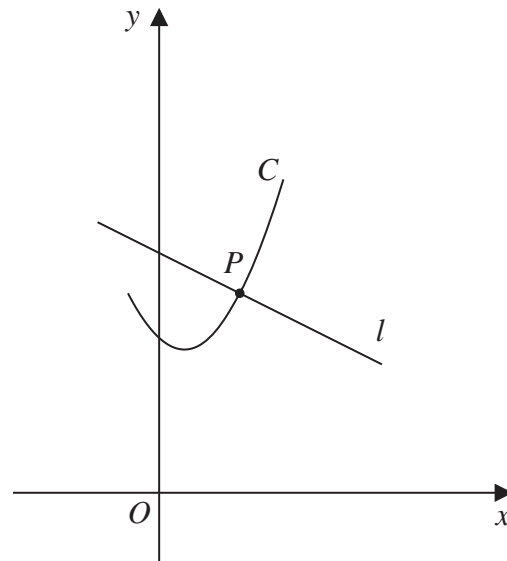


Figure 6

Figure 6 shows a sketch of the curve C with parametric equations

$$x = 2 \tan t + 1 \quad y = 2 \sec^2 t + 3 \quad -\frac{\pi}{4} \leq t \leq \frac{\pi}{3}$$

The line l is the normal to C at the point P where $t = \frac{\pi}{4}$

(a) Using parametric differentiation, show that an equation for l is

$$y = -\frac{1}{2}x + \frac{17}{2} \quad (5)$$

(b) Show that all points on C satisfy the equation

$$y = \frac{1}{2}(x-1)^2 + 5 \quad (2)$$

The straight line with equation

$$y = -\frac{1}{2}x + k \quad \text{where } k \text{ is a constant}$$

intersects C at two distinct points.

(c) Find the range of possible values for k .

(5)
